

## Chy-an-glas

Hyns Treworles (No. 3 & 4); Park an Daras (No. 1, 3 & 5);

Park an Fenton (No. 2, 22 & 23); Park Wartha (No. 1, 2, 3, 4, 8, 10, 11, 13, 14 & 16)



**Park an Daras**

Helston | Cornwall

Perhaps one of the most striking houses on the development, the Chy an Glas is an impressive three bedroom home.

The external appearance of this house combines granite stone work with timber effect cladding, render and a window frontage which vertically spans two floors. Inside, there's a bright and spacious lounge, a kitchen/ dining room which overlooks the garden and a separate WC. On the first floor there is a master bedroom with two further bedrooms and a family bathroom. This stylish home is definitely one not to be missed.



Where timber clad or render sections are shown there will be one of four colour pallets used. This CGI gives an example of just one of the 4 colour ranges. Please enquire with the sale agents for the colour choice on a plot by plot basis.



## Chy-an-glas

Hyns Treworles (No. 3 & 4); Park an Daras (No. 1, 3 & 5);

Park an Fenton (No. 2, 22 & 23); Park Wartha (No. 1, 2, 3, 4, 8, 10, 11, 13, 14 & 16)



# Park an Daras

Helston | Cornwall

### GROUND FLOOR:

#### Kitchen/Dining:

5.20m x 3.40m  
(17'1" x 11'2") max

#### Lounge:

3.10m x 4.75m  
(10'2" x 15'7") max

#### W/C

### FIRST FLOOR:

#### Bedroom 1:

2.90m x 4.25m  
(9'6" x 13'11") max

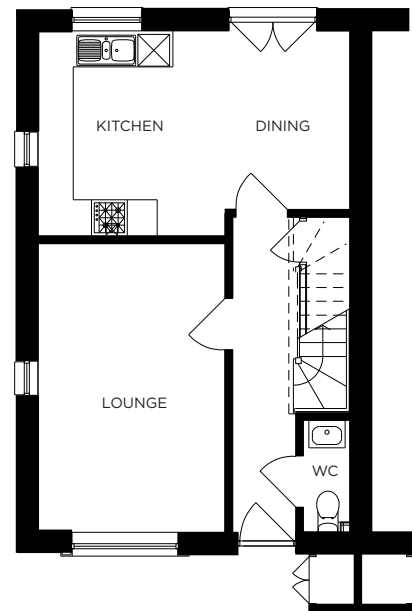
#### Bedroom 2:

2.90m x 3.20m  
(9'6" x 10'6") max

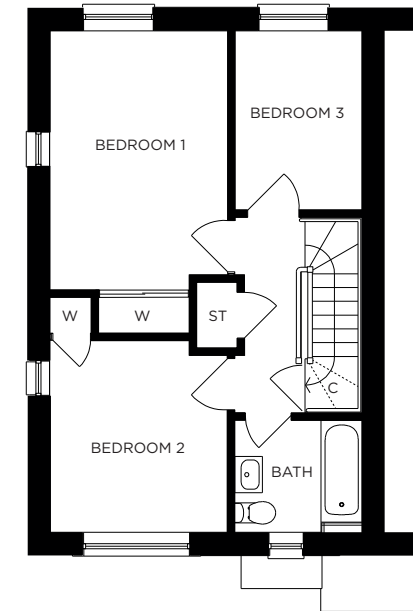
#### Bedroom 3:

2.11m x 2.90m  
(6'11" x 9'6") max

#### Bathroom:



GROUND FLOOR



FIRST FLOOR

All measurements given are approximate, for further details please contact the agents. Dimensions given are done so in good faith and before construction has commenced. They are approximate and for guidance only and should not be used for furniture or appliance purchases. Purchasers are strongly advised to confirm actual dimensions when the property is nearing completion or is completed.

Tel. 01326 564321  
bradleys-estate-agents.co.uk

