

## Chyemlow

Hyns Treworles (No. 5-8); Park an Fenton (No. 3);

Park Wartha (No. 9, 12, 15)



**Park an Daras**

Helston | Cornwall

The Chyemlow is a fine looking house which combines functionality with good design.

There are both terraced and end of terrace 'Chyemlow' house types available. On the ground floor is a modern kitchen and dining area, separate WC and a nicely proportioned lounge which overlooks the rear garden. Upstairs, are two double bedrooms, storage and a family bathroom.



Computer Generated Image

Plots 35 – 38 will have granite front elevations as shown but plot 41 will have a rendered front elevation.

Where timber clad or render sections are shown there will be one of four colour pallets used.

This CGI gives an example of just one of the 4 colour ranges. Please enquire with the sale agents for the colour choice on a plot by plot basis.



Chyemlow

Hyns Treworles (No. 5-8); Park an Fenton (No. 3);

Park Wartha (No. 9, 12, 15)



**Park an Daras**

Helston | Cornwall

**GROUND FLOOR:**

**Kitchen:**

2.65m x 3.10m  
(8'8" x 10'2") max

**Lounge/Dining:**

3.90m x 4.50m max  
(12'9" x 14'9") max

**W/C:**

**FIRST FLOOR:**

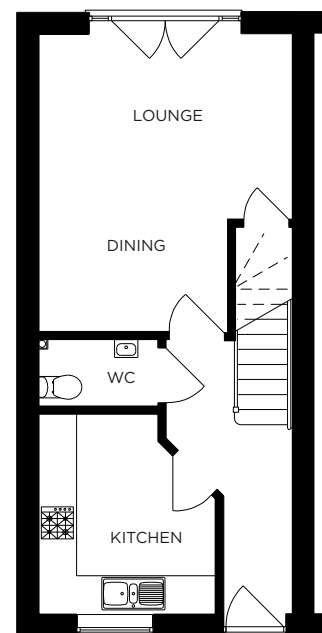
**Bedroom 1:**

3.90m x 2.90m  
(12'10" x 9'6") max

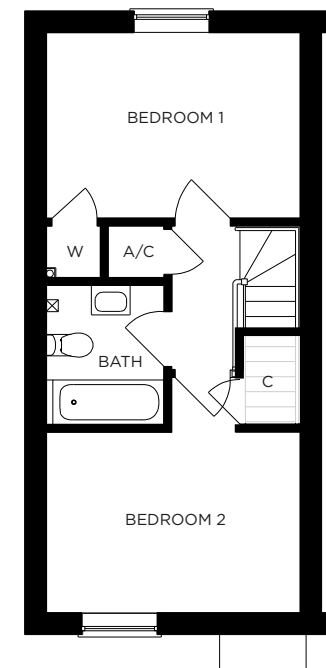
**Bedroom 2:**

3.90m x 2.70m  
(12'10" x 8'10") max

**Bathroom:**



**GROUND FLOOR**



**FIRST FLOOR**

All measurements given are approximate, for further details please contact the agents. Dimensions given are done so in good faith and before construction has commenced. They are approximate and for guidance only and should not be used for furniture or appliance purchases. Purchasers are strongly advised to confirm actual dimensions when the property is nearing completion or is completed.

Tel. 01326 564321  
bradleys-estate-agents.co.uk

