

## Crowgey

Hyns Treworles (No. 2); Park an Daras (No. 7);  
Park an Fenten (No. 10)



**Park an Daras**

Helston | Cornwall

The Crowgey is a home designed with the individual in mind. Its symmetry, pitched roof and exterior mix of granite and render finishes make this a very attractive property.

From the entrance and hallway, the house benefits from a downstairs WC, a separate, contemporary kitchen and a large dining room/living room which overlooks the garden. The first floor has a master bedroom with a second, double bedroom and a family bathroom.



Where timber clad or render sections are shown there will be one of four colour pallets used. This CGI gives an example of just one of the 4 colour ranges. Please enquire with the sale agents for the colour choice on a plot by plot basis.



## Crowgey

Hyns Treworles (No. 2); Park an Daras (No. 7);

Park an Fenten (No. 10)



# Park an Daras

Helston | Cornwall

### GROUND FLOOR:

#### Kitchen:

2.45m x 2.58m

(8'1" x 8'6") max

#### Lounge / Dining:

5.75m x 3.15m

(18'10" x 10'4") max

#### W/C

### FIRST FLOOR:

#### Bedroom 1:

4.73m x 2.70m

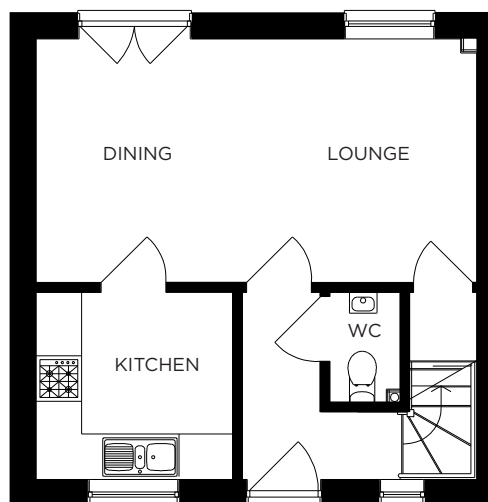
(15'6" x 8'10") max

#### Bedroom 2:

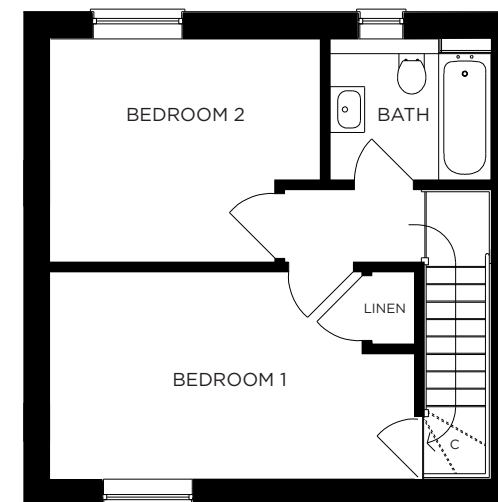
3.53m x 2.92m

(11'7" x 9'7") max

#### Bathroom:



GROUND FLOOR



FIRST FLOOR

All measurements given are approximate, for further details please contact the agents. Dimensions given are done so in good faith and before construction has commenced. They are approximate and for guidance only and should not be used for furniture or appliance purchases. Purchasers are strongly advised to confirm actual dimensions when the property is nearing completion or is completed.

Tel. 01326 564321  
bradleys-estate-agents.co.uk

