

Elynnow

Park Wartha (No. 5, 6)



Park an Daras

Helston | Cornwall

A stunningly finished 4 bedroom home which has been cleverly designed for the way you want to live your life.

This is a house which looks good from every angle. On the ground floor the Elynnow offers a spacious lounge with French doors, separate kitchen and dining area, a good-sized hallway, WC and a useful study/office room.

There are four bedrooms on the first floor (one with ensuite) and a family bathroom. Outside, the property has a patio area sheltered by a timberframed pergola and garden.



Computer Generated Image

Where timber clad or render sections are shown there will be one of four colour pallets used. This CGI gives an example of just one of the 4 colour ranges. Please enquire with the sale agents for the colour choice on a plot by plot basis.



Elynnow

Park Wartha (No. 5, 6)

GROUND FLOOR:

Kitchen / Dining:

2.87m x 5.71m
(9'5" x 18'9") max

Lounge:

3.50m x 5.31m
(11'6" x 17'5") max

Study:

2.88m x 2.36m
(9'5" x 7'9") max

W/C:

FIRST FLOOR:

Bedroom 1 (En Suite):

2.90m x 3.90m
(9'6" x 12'10") max

Bedroom 2:

2.87m x 3.42m
(9'5" x 11'3") max

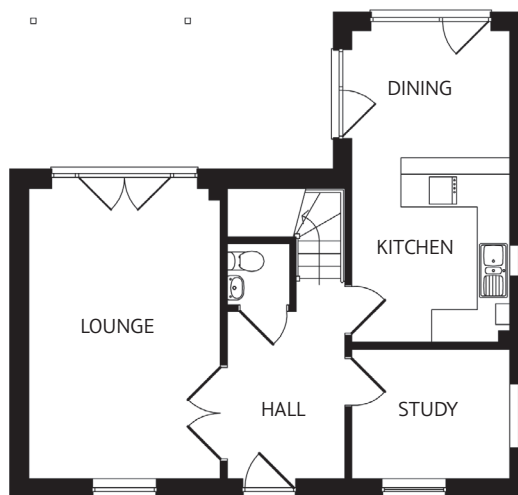
Bedroom 3:

2.15m x 2.36m
(7'1" x 7'9") max

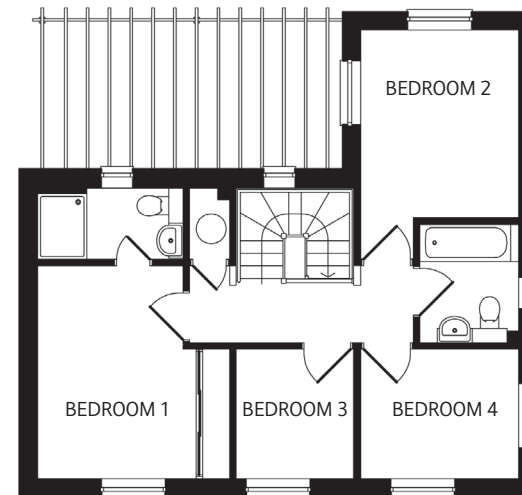
Bedroom 4:

2.87m x 2.36m
(9'5" x 7'9") max

Bathroom:



GROUND FLOOR



FIRST FLOOR

All measurements given are approximate, for further details please contact the agents. Dimensions given are done so in good faith and before construction has commenced. They are approximate and for guidance only and should not be used for furniture or appliance purchases. Purchasers are strongly advised to confirm actual dimensions when the property is nearing completion or is completed.

Tel. 01326 564321
bradleys-estate-agents.co.uk

