

Pentughel

Park an Fenten (No. 1, 12)



Park an Daras

Helston | Cornwall

A functional and versatile, detached property which offers an impressive living space and two double bedrooms.

The coach house has been designed to provide a spacious self-contained apartment. This home is accessed via a private stairway leading into a large, open-plan dining/living room and kitchen area. It has two double bedrooms and a family bathroom.



Computer Generated Image

Where timber clad or render sections are shown there will be one of four colour pallets used. This CGI gives an example of just one of the 4 colour ranges. Please enquire with the sale agents for the colour choice on a plot by plot basis.



Pentughel

Park an Fenten (No. 1, 12)



Park an Daras

Helston | Cornwall

GROUND FLOOR:

Kitchen:

4.95m x 2.37m
(16'3" x 7'9") max

Living Room:

3.84m x 5.31m
(12'7" x 17'5") max

Bathroom:

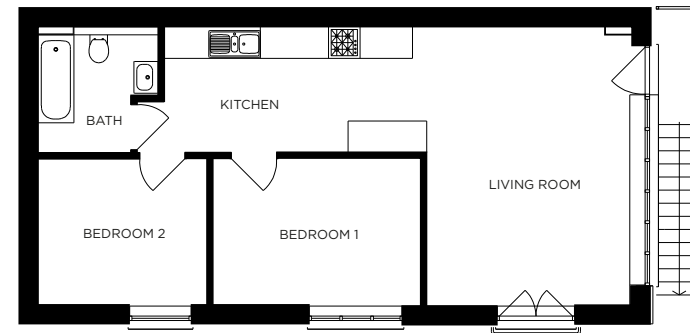
FIRST FLOOR:

Bedroom 1:

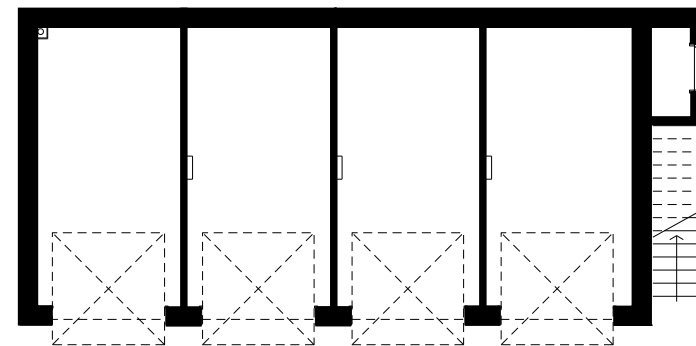
3.95m x 2.79m
(12'11" x 9'2") max

Bedroom 2:

3.21m x 2.79m
(10'6" x 9'2") max



FIRST FLOOR



GROUND FLOOR

All measurements given are approximate, for further details please contact the agents. Dimensions given are done so in good faith and before construction has commenced. They are approximate and for guidance only and should not be used for furniture or appliance purchases. Purchasers are strongly advised to confirm actual dimensions when the property is nearing completion or is completed.

Tel. 01326 564321
bradleys-estate-agents.co.uk

