

Tourow

Hyns Treworles (No. 1)



Park an Daras

Helston | Cornwall

The Tourow is as striking on the outside as it is within. The square construction, pitched roof and three levels makes the Tourow a highly attractive home.

Externally, the Tourow is finished with granite stone and render. Inside, there's a large dining/living room, separate kitchen and WC. On the first floor there are two good-sized bedrooms with a family bathroom and storage. The second floor offers two further bedrooms (one of which includes an en suite) and additional storage. Outside the property features an enclosed garden.



Where timber clad or render sections are shown there will be one of four colour pallets used. This CGI gives an example of just one of the 4 colour ranges. Please enquire with the sale agents for the colour choice on a plot by plot basis.



Tourow

Hyns Treworles (No. 1)

GROUND FLOOR:

Kitchen:

2.57m x 2.46m
(8'5" x 8'1") max

Lounge/Dining:

5.75m x 3.15m
(18'10" x 10'4") max

W/C:

FIRST FLOOR:

Bedroom 1:

3.04m x 2.82m
(10'0" x 9'3") max

Bedroom 2:

3.30m x 2.81m
(10'10" x 9'3") max

Bathroom:

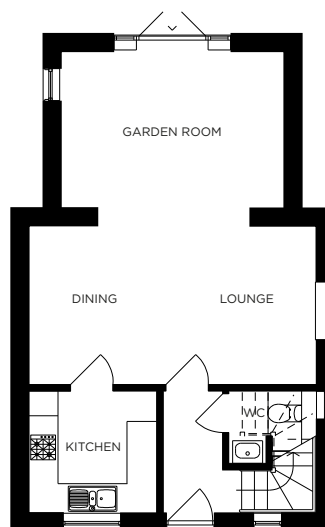
SECOND FLOOR:

Bedroom 3 (En Suite):

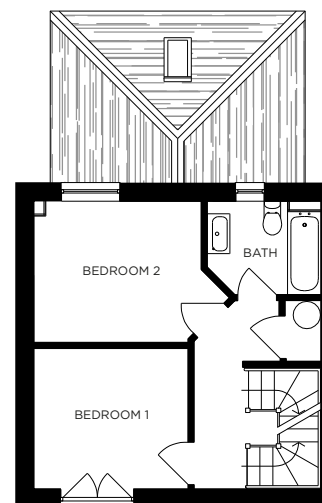
3.50m x 4.13m
(11'6" x 13'6") max

Bedroom 4:

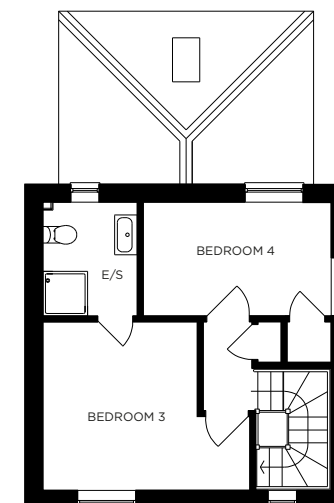
3.78m x 2.21m
(12'5" x 7'3") max



GROUND FLOOR



FIRST FLOOR



SECOND FLOOR

All measurements given are approximate, for further details please contact the agents. Dimensions given are done so in good faith and before construction has commenced. They are approximate and for guidance only and should not be used for furniture or appliance purchases. Purchasers are strongly advised to confirm actual dimensions when the property is nearing completion or is completed.

Tel. 01326 564321
bradleys-estate-agents.co.uk

