

The Cober
Park An Daras (No. 8 & 17)



Park an Daras

Helston | Cornwall

Offering what we believe to be the essence of the traditional family home, the Cober presents spacious and versatile accommodation with four double bedrooms, master en suite facilities, a full length, double aspect lounge/diner, separate sitting room and third reception room/study. Not to mention the family bathroom and ground floor WC.



Where timber clad or render sections are shown there will be one of four colour pallets used. This CGI gives an example of just one of the 4 colour ranges. Please enquire with the sale agents for the colour choice on a plot by plot basis.



The Cober

Park An Daras (No. 8 & 17)

Ground floor

Entrance Hall

Cloakroom

Living room 3.25m (10'8") x 4.48m (14'8")

Study / family room 3.25m (10'8") x 2.05m (6'9")

Kitchen / Dining 3.14m (10'4") narrowing to 2.60m (8'6") x 6.65m (21'10")

First floor

Bedroom 1 3.25m (10'8") x 3.30m (10'10") to en suite

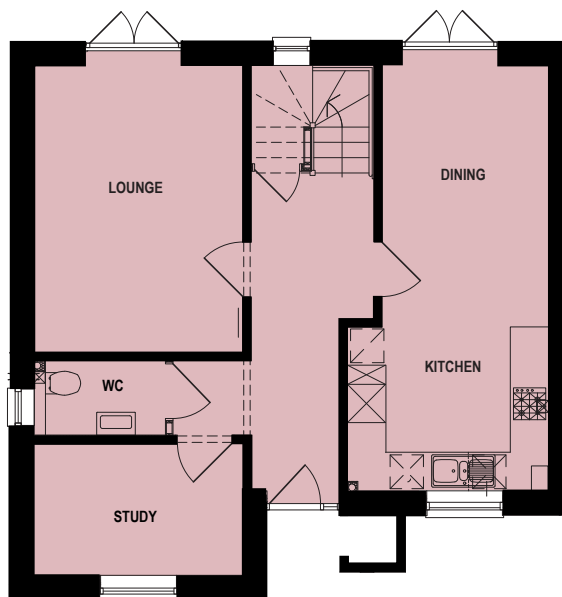
En suite shower room

Bedroom 2 2.60m (8'6") max x 3.44m (11'3")

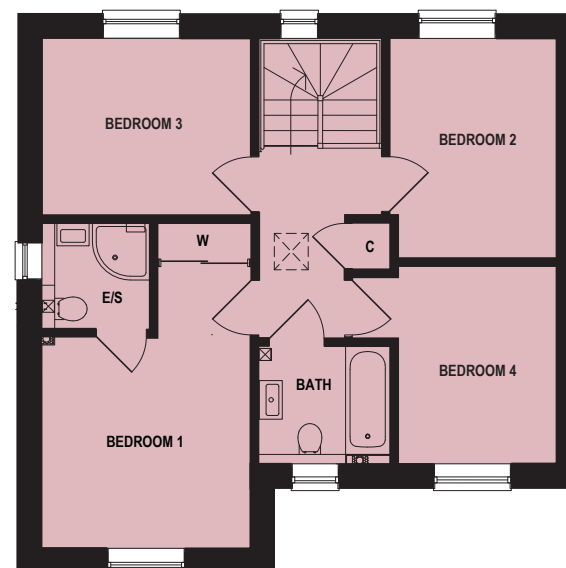
Bedroom 3 3.25m (10'8") x 2.75m (9'0")

Bedroom 4 2.47m (8'1") max x 3.08m (10'1") max

Bathroom



GROUND FLOOR



FIRST FLOOR

All measurements given are approximate, for further details please contact the agents. Dimensions given are done so in good faith and before construction has commenced. They are approximate and for guidance only and should not be used for furniture or appliance purchases. Purchasers are strongly advised to confirm actual dimensions when the property is nearing completion or is completed.

Tel. 01326 564321
bradleys-estate-agents.co.uk

