

The Kensey

Gwel Trelulla (No. 10, 24 & 25)

*An Gew (No. 3)



Park an Daras

HELSTON | CORNWALL

An impressive three bedroom home offering the ideal space for a growing family.

The ground floor offers a full length, double aspect kitchen dining room with patio doors to the rear garden, the spacious sitting room also spans the full length of the house enjoying a double aspect and another set of patio doors offering access to the rear garden.

The first floor offers three double bedrooms, master with en-suite facilities and family bathroom.

*Externally this home enjoys off road parking, garage and enclosed rear garden.



Computer Generated Image



*With the exception of 10 Gwel Trelulla which enjoys off road parking for two cars

The Kensey

Gwel Trelulla (No. 10, 24 & 25)

*An Gew (No. 3)

GROUND FLOOR

Entrance hall

Cloakroom

Lounge

3.27m (10'7") x 6.17m (20'2")

Kitchen / Dining

2.83m (9'3") x 5.55m (18'2")

FIRST FLOOR

Bedroom 1

2.83m (9'3") x 2.90m (9'5") to wardrobe

En suite

Bedroom 2

3.14m (10'3") x 3.38m (11'1")

Bedroom 3

3.27m (10'7") x 2.66m (8'7")

Bathroom

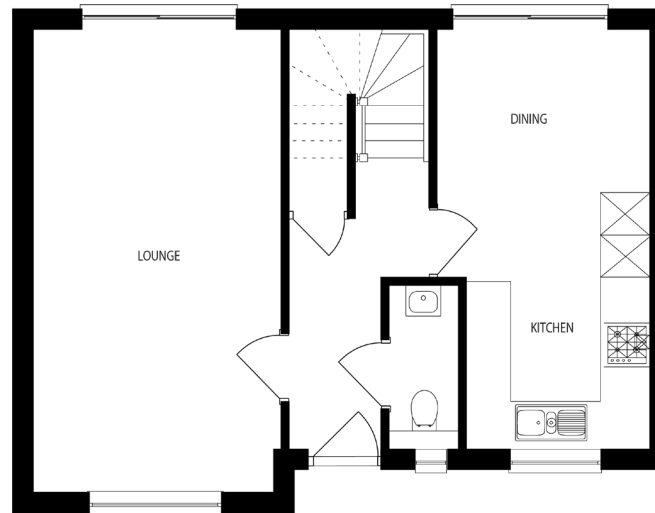
All measurements given are approximate, for further details please contact the agents. Dimensions given are done so in good faith and before construction has commenced. They are approximate and for guidance only and should not be used for furniture or appliance purchases. Purchasers are strongly advised to confirm actual dimensions when the property is nearing completion or is completed.

Tel. 01326 564321
bradleys-estate-agents.co.uk

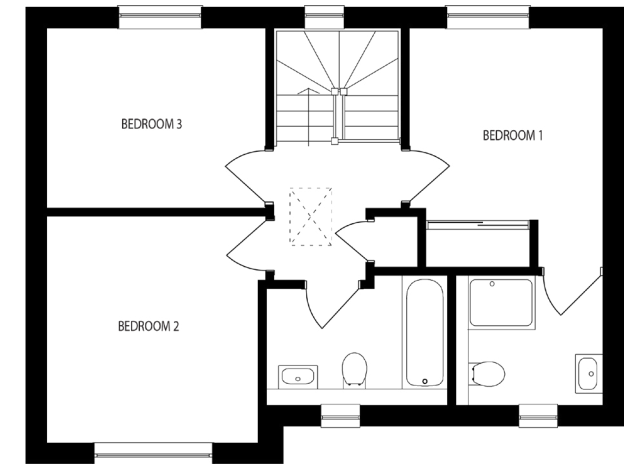


Park an Daras

HELSTON | CORNWALL



GROUND FLOOR



FIRST FLOOR



Registered House Builder

