

The Penpol

Gwel Trelulla (No. 12, 21)

An Gew (No. 5)



Park an Daras

HELSTON | CORNWALL

The largest home at Park An Daras.

A beautifully designed, traditional family home offering impressive and versatile living space, garage and driveway.

'The Penpol' enjoys multiple living areas, four double bedrooms and master en suite and the added benefit of a utility room.

Externally the property enjoys a garage and driveway providing off road parking.



Computer Generated Image



The Penpol

Gwel Trelulla (No. 12, 21)

An Gew (No. 5)

GROUND FLOOR:

Kitchen

9.02m x 3.00m (29'6" x 9'8") max

Lounge

5.00m x 3.14m (16'4" x 10'3") max

Study

2.81m x 3.17m (9'2" x 10'4") max

Utility

2.14m x 2.95m (7'0" x 9'7") max

FIRST FLOOR:

Bedroom 1

3.62m x 3.69m (11'9" x 12'1") max

Bedroom 2

3.17m x 4.29m (10'4" x 14'1") max

Bedroom 3

3.17m x 3.72m (10'4" x 12'2") max

Bedroom 4

3.28m x 3.00m (10'8" x 9'8") max

All measurements given are approximate, for further details please contact the agents. Dimensions given are done so in good faith and before construction has commenced. They are approximate and for guidance only and should not be used for furniture or appliance purchases. Purchasers are strongly advised to confirm actual dimensions when the property is nearing completion or is completed.

Tel. 01326 564321
bradleys-estate-agents.co.uk

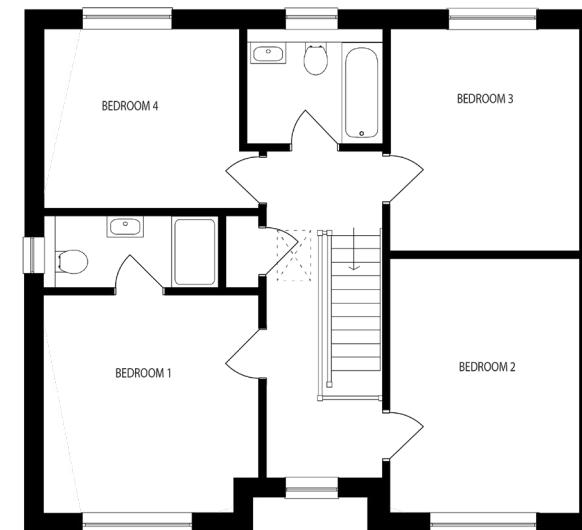


Park an Daras

HELSTON | CORNWALL



GROUND FLOOR



FIRST FLOOR

