

The Tonnow

Gwel Trelulla (No. 7 & 11)

An Gew (No. 1)



Park an Daras

HELSTON | CORNWALL

The Tonnow is a detached home with some very interesting features and an ideal choice for a growing family.

The entrance has a useful porch with integral storage. Inside, there's a large kitchen/dining room, spacious lounge and there's also a separate ground floor WC. On the first floor there are three double bedrooms (one with ensuite) and a family bathroom.

Externally, this home benefits from a garage and off road parking.



Computer Generated Image



The Tonnaw

Gwel Trelulla (No. 7 & 11)

An Gew (No. 1)

GROUND FLOOR:

Kitchen/Dining

2.83m x 5.60m (9'3" x 18'4") max

Lounge:

5.60m x 3.37m (18'4" x 11'1") max

W/C

FIRST FLOOR:

Bedroom 1 (En Suite):

2.86m x 2.90m (9'4" x 9'5") into wardrobe

Bedroom 2:

3.37m x 2.78m (11'1" x 9'1") max

Bedroom 3:

3.37m x 2.69m (11'1" x 8'8") max

Bathroom

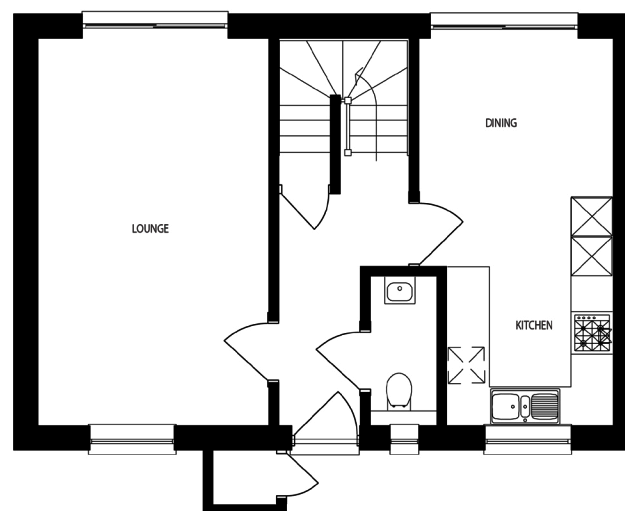
All measurements given are approximate, for further details please contact the agents. Dimensions given are done so in good faith and before construction has commenced. They are approximate and for guidance only and should not be used for furniture or appliance purchases. Purchasers are strongly advised to confirm actual dimensions when the property is nearing completion or is completed.

Tel. 01326 564321
bradleys-estate-agents.co.uk

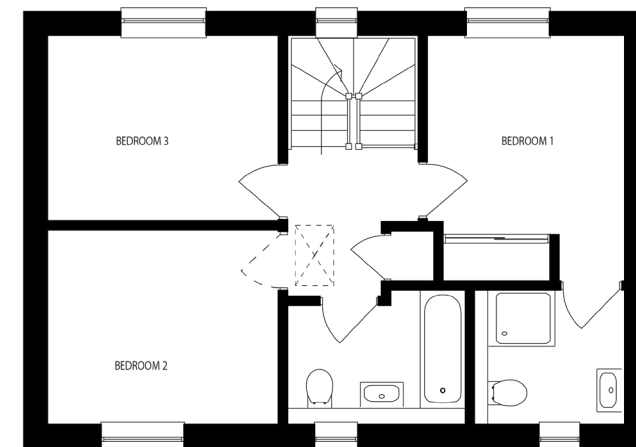


Park an Daras

HELSTON | CORNWALL



GROUND FLOOR



FIRST FLOOR

