

The Trevarrack

Park An Daras (No. 28, 26

An Gew (No. 7)

Gwel Trelulla (No. 22)



Park an Daras

HELSTON | CORNWALL

In similar style to Robertsons ever popular Chy-An-Glas, 4 bedroom 'Trevarrack' is also one of the most striking houses on the development.

The external appearance of this house combines granite stonework with timber effect cladding, render and a window frontage that spans two floors.

Internally, on the ground floor there is a large kitchen/ dining room, lounge and ground floor WC. To the first floor are 4 bedrooms, master en suite facilities and family bathroom.

Externally, this home enjoys a garage, a driveway providing off road parking and an enclosed rear garden.



Computer Generated Image



The Trevarrack

Park An Daras (No. 28, 26

An Gew (No. 7)

Gwel Trelulla (No. 22)

GROUND FLOOR:

Kitchen/Dining:

6.00m x 3.95m (19'8" x 12'11")

Lounge:

5.05m x 3.45m (16'7" x 11'4") max

W/C

FIRST FLOOR:

Bedroom 1:

3.77m x 3.10m (12'4" x 10'2") max

Bedroom 2:

2.98m x 3.51m (9'8" x 11'5") max

Bedroom 3:

2.90m x 2.38m (9'5" x 7'8") max

Bedroom 4:

2.84m x 2.17m (9'3" x 7'1") max

Bathroom

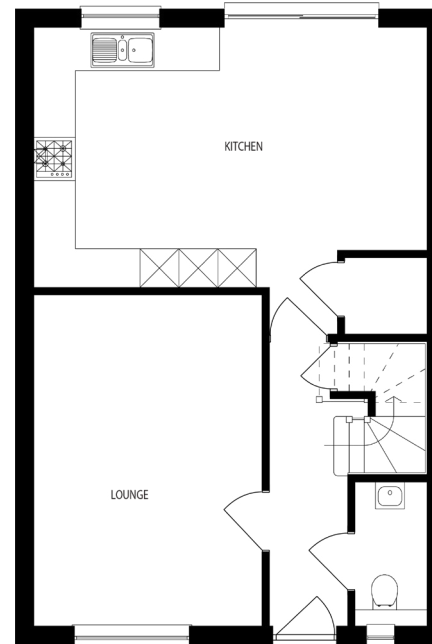
All measurements given are approximate, for further details please contact the agents. Dimensions given are done so in good faith and before construction has commenced. They are approximate and for guidance only and should not be used for furniture or appliance purchases. Purchasers are strongly advised to confirm actual dimensions when the property is nearing completion or is completed.

Tel. 01326 564321
bradleys-estate-agents.co.uk

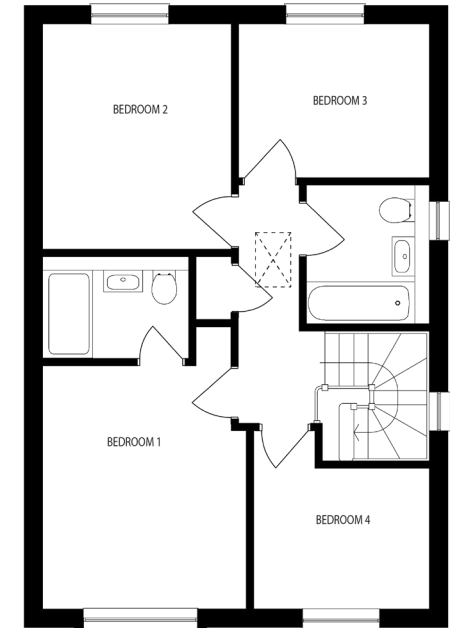


Park an Daras

HELSTON | CORNWALL



GROUND FLOOR



FIRST FLOOR



Registered House Builder

