

The Gannel

Gwel Trelulla (No. 20)



Park an Daras

HELSTON | CORNWALL

Faced with traditional Cornish stone, the attractive 'Gannel' offers a spacious family home with accommodation comprising three bedrooms, master en-suite, a spacious lounge and a kitchen diner spanning the width of the house and enjoying patio doors out onto the rear garden patio as well as a ground floor WC and family bathroom.

Externally this home enjoys off road parking, garage and enclosed rear garden.



Computer Generated Image



The Gannel

Gwel Trelulla (No. 20)

GROUND FLOOR

Entrance Hall

Cloakroom

Living Room

5.23m (17'2") x 3.54m (11'6")

Kitchen / Dining

5.60m (18'3") x 2.95m (9'6") max

FIRST FLOOR

Bedroom 1

3.68m max (12'0") x 3.25m (10'6")

En Suite

Bedroom 2

3.25m (10'6") x 3.25m (10'6")

Bedroom 3

2.65m (8'6") x 2.14m (7'0")

Bathroom

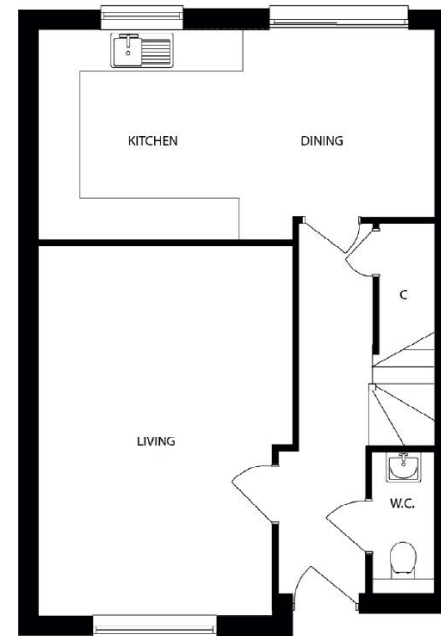
All measurements given are approximate, for further details please contact the agents. Dimensions given are done so in good faith and before construction has commenced. They are approximate and for guidance only and should not be used for furniture or appliance purchases. Purchasers are strongly advised to confirm actual dimensions when the property is nearing completion or is completed.

Tel. 01326 564321
bradleys-estate-agents.co.uk

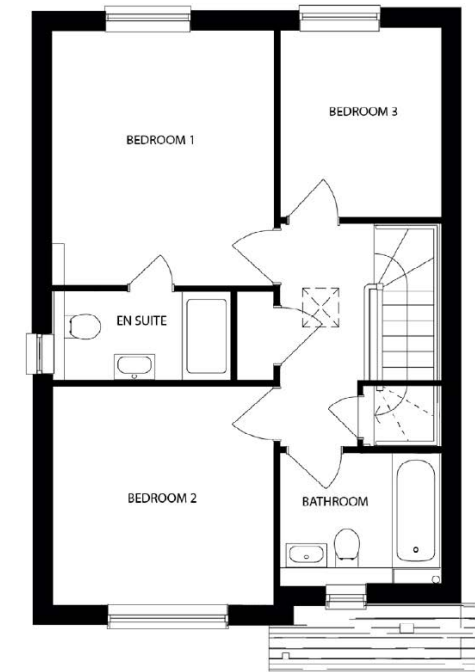


Park an Daras

HELSTON | CORNWALL



GROUND FLOOR



FIRST FLOOR

